

# 25 years of ITEA Roadshow - Germany NLP4SDLC

15 June 2023 | Online  
Robin Gröpler (ifak Germany)

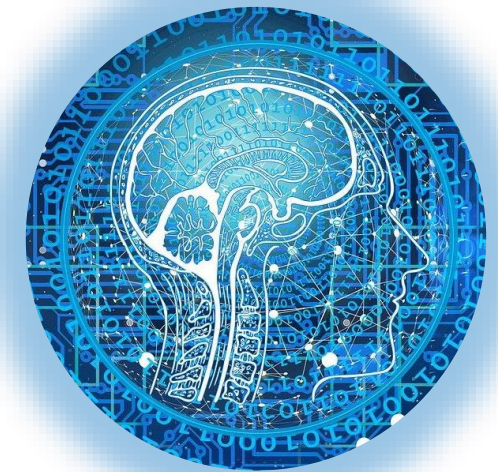


ITEA is the Eureka Cluster on software innovation



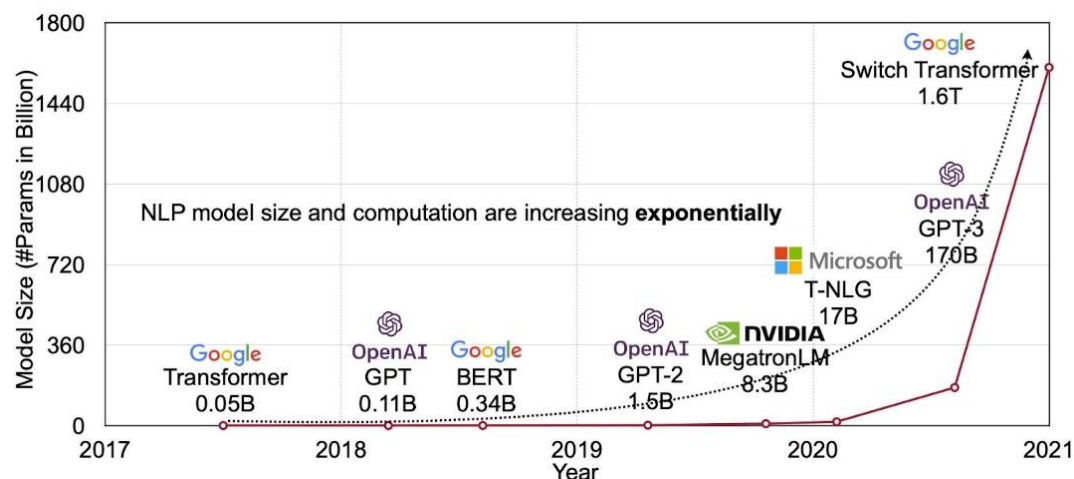
# How can Natural Language Processing (NLP) support the Software Development Life Cycle (SDLC)?

- **ChatGPT** is a breakthrough in AI! Applications in many fields for:
  - Human knowledge acquisition and learning processes
  - Conversational search (no keyword search)
  - Fast human-like feedback→ **Strong business impact** in the next decade expected
- State-of-practice in Software Engineering:
  - Mainly manual work of developers and test engineers
  - Some domain-/task-specific ML and NLP models→ **Huge improvements** in programming and quality assurance possible



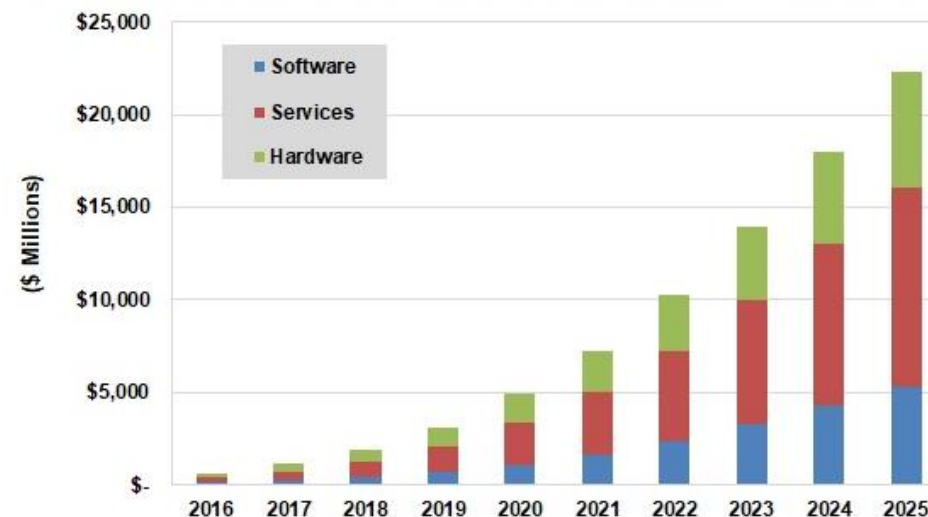
# How can Natural Language Processing (NLP) support the Software Development Life Cycle (SDLC)?

- **Rapidly growing** development and improvement of Large Language Models
- Natural Language Processing Is a Key Engine of **AI Market Growth**

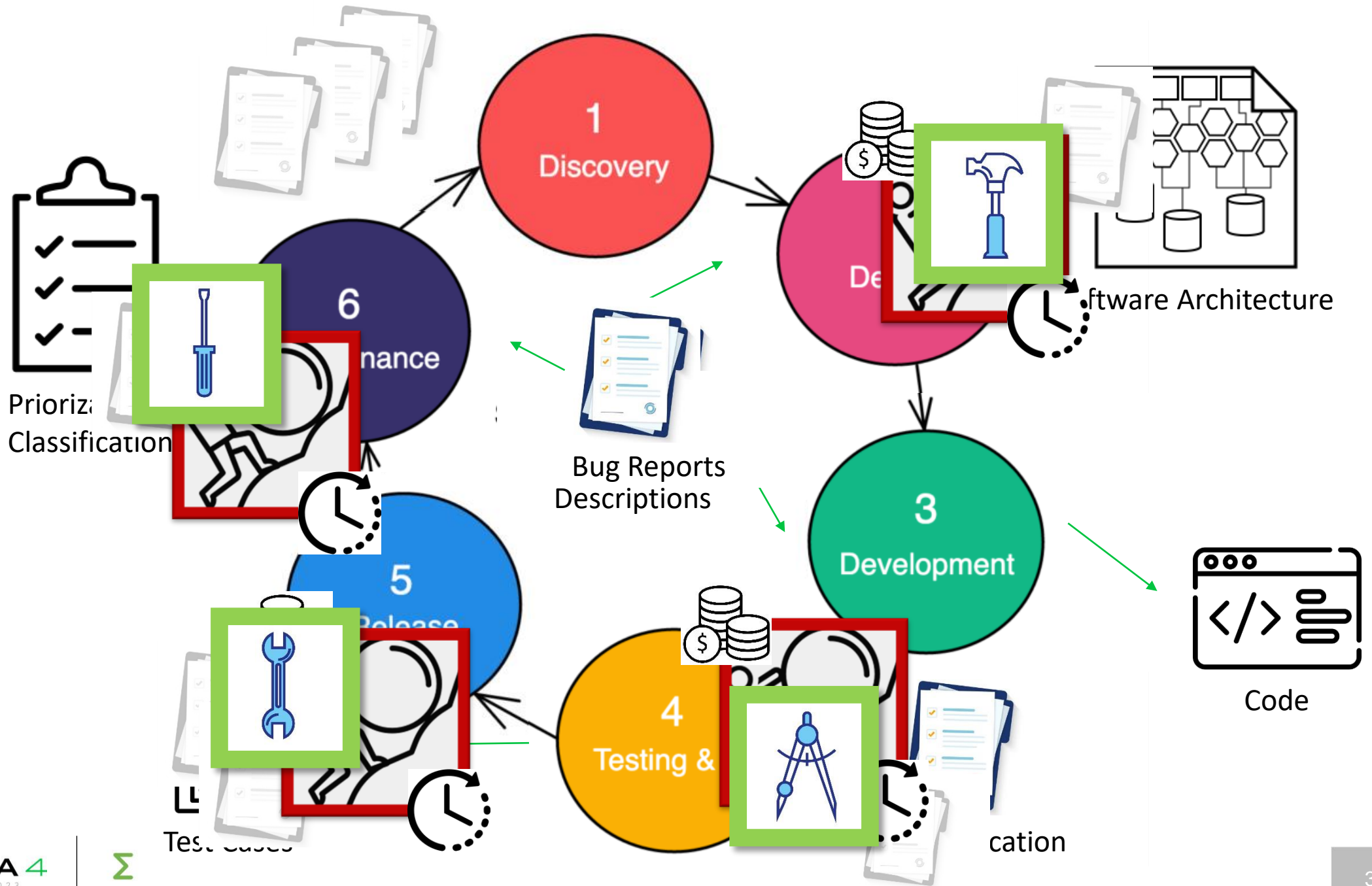


<https://indiaai.gov.in/article/the-future-of-large-language-models-llms-strategy-opportunities-and-challenges>

Natural Language Processing Total Revenue by Segment, World Markets: 2016-2025



Source: Tractica



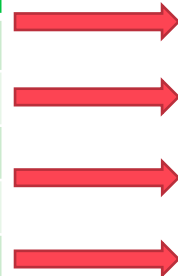
# How can Natural Language Processing (NLP) support the Software Development Life Cycle (SDLC)?

- **Project idea:** Make use of these emerging AI technologies for the software development process!

## 1. Analyse

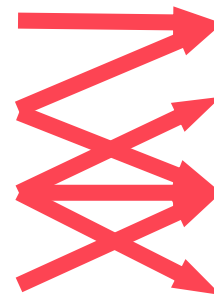
Use Cases of all partners to define requirements and interfaces

	Part-ner 1	Part-ner 2	...
Requirements → Design	✓		
Descriptions → Code		✓	✓
Test Spec → Test Cases	✓		✓
Bug Reports → Classification			✓
...			



## 2. Develop

Small, individual tools to solve distinct NLP tasks



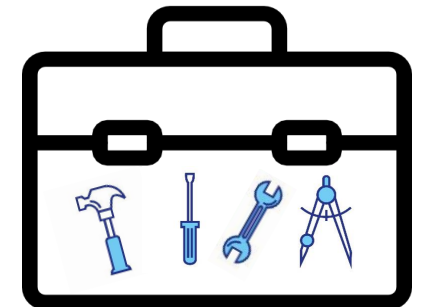
## 3. Integrate

Tools into the SLDC of the partners



## 4. Publish

All tools as Open Source Toolbox





# What are you looking for?

- **Expertise of ifak:**

- Industrial Automation, Test Automation, Model-Based Testing, ML, NLP
- Participation in several ITEA projects: TESTOMAT, XIVT, SmartDelta

- **Missing partners / expertise**

- Industry partners (LE/SME) with interest in utilizing new AI technologies, providing relevant use cases and data
- ML and Data Science companies and research organizations

- **Partners already involved**

- In discussion with some German and Turkish industrial partners

# Contact details

- **Robin Gröpler**  
ifak Institute for Automation and Communication  
Germany  
[robin.groepler@ifak.eu](mailto:robin.groepler@ifak.eu)
  
- **Björn Otto**  
ifak Institute for Automation and Communication  
Germany  
[bjoern.otto@ifak.eu](mailto:bjoern.otto@ifak.eu)

