

25 years of ITEA webinar – Belgium



SPW RESEARCH

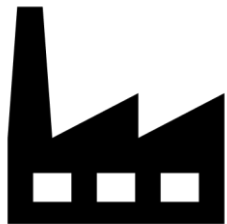
2 June 2023 | Online
Fabrice Quertain, SPW Research



ITEA is the Eureka Cluster on software innovation



Who's eligible?



SMEs and large companies



Research centers

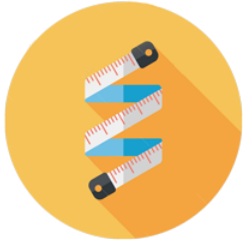


Universities

What do we expect?



Collaborative applied research project
Crystal clear Business Plan

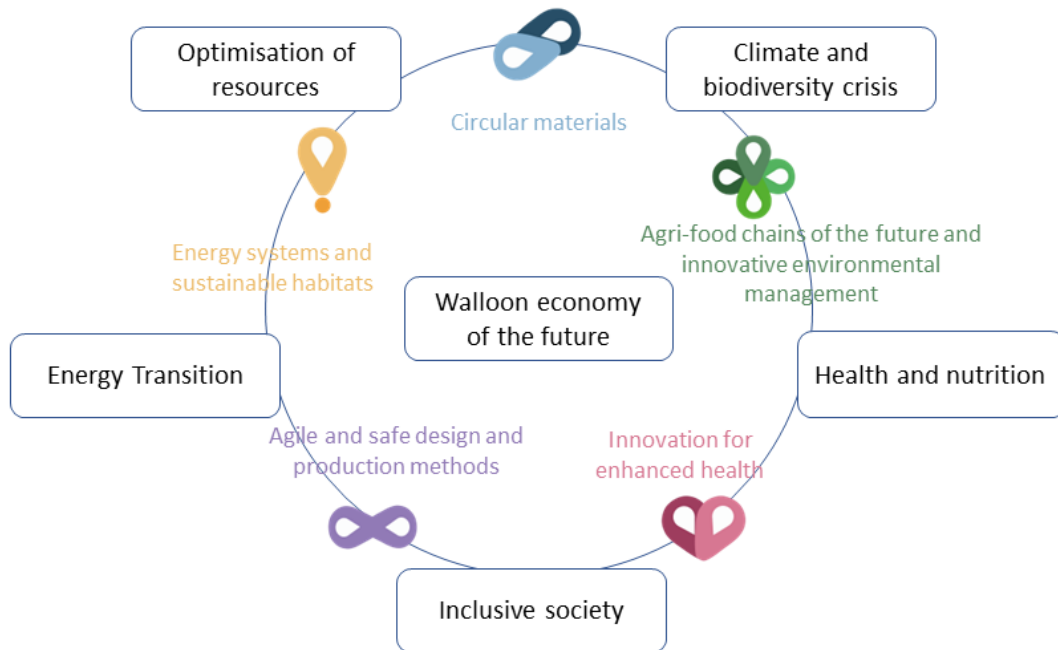


Fair international collaboration
At least 40% of the total research budget of Walloon partners for Walloon industrial partners



Maximum project duration: 36 months

Eligibility criteria and regional priorities



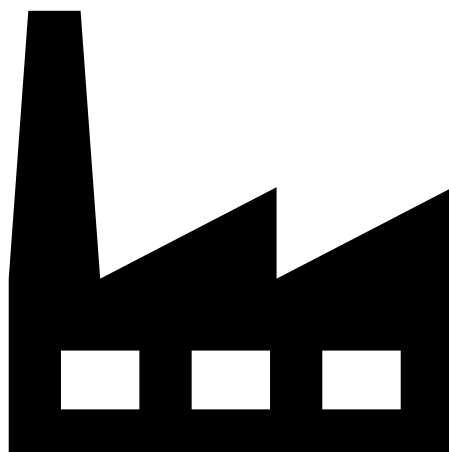
- Topics : bottom-up approach within areas for strategic innovation (s3.wallonie.be)
- Open budget for the ITEA call
- Minimum one Walloon company in the consortium, universities and research centres eligible as partners.
- Financial viability of the company(ies) assessed.

Research qualification

Industrial research VS Experimental development

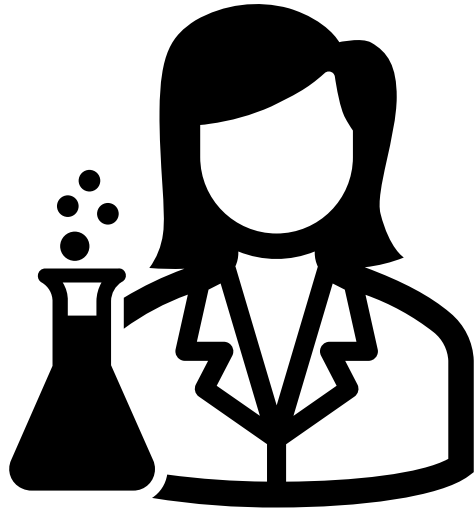
Industrial research	Experimental development
Knowledge acquisition	Towards a proof of concept
From experimental proof to validation in a representative environment	From validation in a representative environment to a prototype in an operational environment
Far from market launch	Closer to the market
TRL 3-5	TRL 5-7

How much? (max rates)



- **Small companies**
 - ED: grant 60% - loan 70%
 - IR: grant 80%
- **Medium-sized companies**
 - ED: grant 50% - loan 60%
 - IR: grant 75%
- **Large companies**
 - ED: grant 40% - loan 50%
 - IR: grant 65%

How much? (grants only)

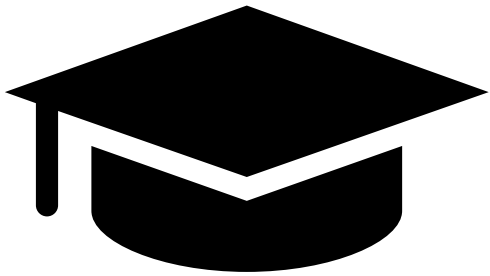


Research Centers

75% IR or ED

A Walloon company must be part of the consortium

How much? (grants only)

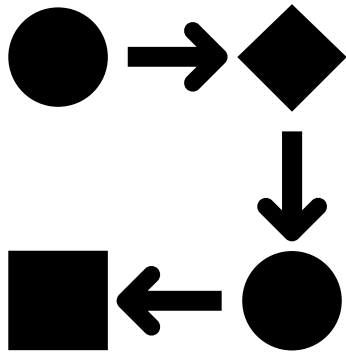


Universities

100% RI or DE

A Walloon company must be part of the consortium

Procedures



-> After FPP accepted, regional submission (ONTIME platform) - deadline next call: 31/5/2024

-> More detailed proposal for Walloon partners:

- Activities & regional impact
- Precise WPs and budget
- Business (Implementation) Plan
- in French

-> Evaluation by written procedure

-> Regular monthly decision meetings

What is mandatory?

To contact us prior to submitting a proposal !



julie.jasmès@spw.wallonie.be
081 33 45 45



fabrice.quertain@spw.wallonie.be
081 33 45 68

*Thank you
for your
attention !*