



An ITEA Smart Health project

# MedGPT

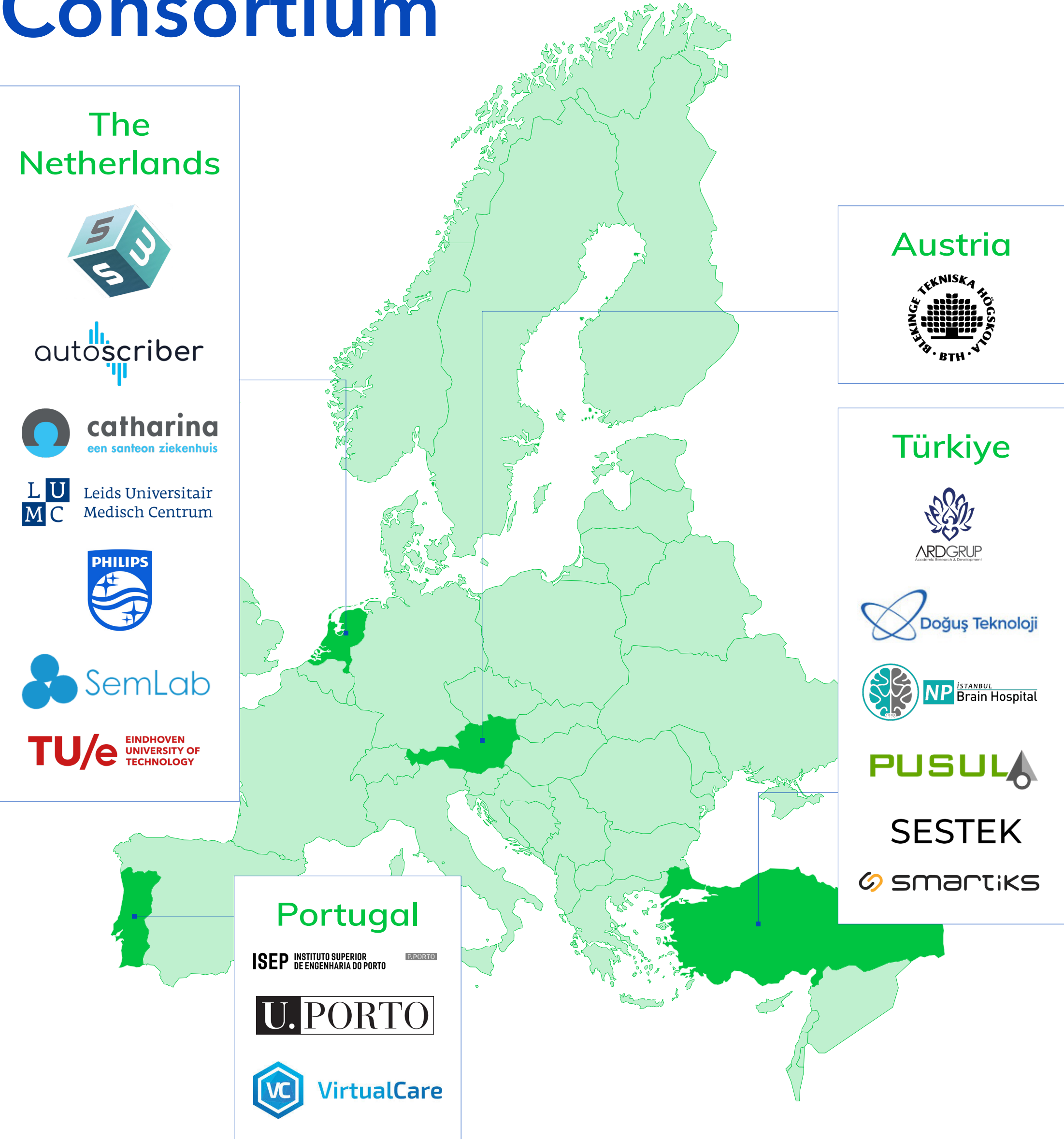


Medical GPT Revolutionizing Healthcare with Ethical AI

## Project summary

The MedGPT project is addressing privacy and ethical concerns by embedding ethical AI and European GDPR & MDR compliance into its platform, utilising European-based LLM with the aim to set the standard for Medical GPT applications globally. This marks a paradigm shift towards smarter health applications, superior efficiency, accuracy and scalability, potentially disrupting current high-maintenance, rigid healthcare systems.

## Consortium



## Project duration

January 2025 - December 2027

## Use cases

- Development of AI algorithms to:
- > predict Intensive Care Unit capacity and patient futility prediction
  - > predict patient deterioration and falls
  - > Generative AI solutions for patient monitoring in intensive care
- Development of a Medical LLM for:
- > obstetrics care
  - > elderly people with multiple chronic conditions and dementia
  - > clinical decision support system for diabetics and obesity for pediatrics

MedGPT  
Project website



<https://medgpt.dev>



## Contact

Bram Stalknecht & Esra Okuyan  
SemLab - The Netherlands  
E: [projects@semlab.nl](mailto:projects@semlab.nl)

ITEA project is supported by:

