

An ITEA Security and safety project

# ENTA

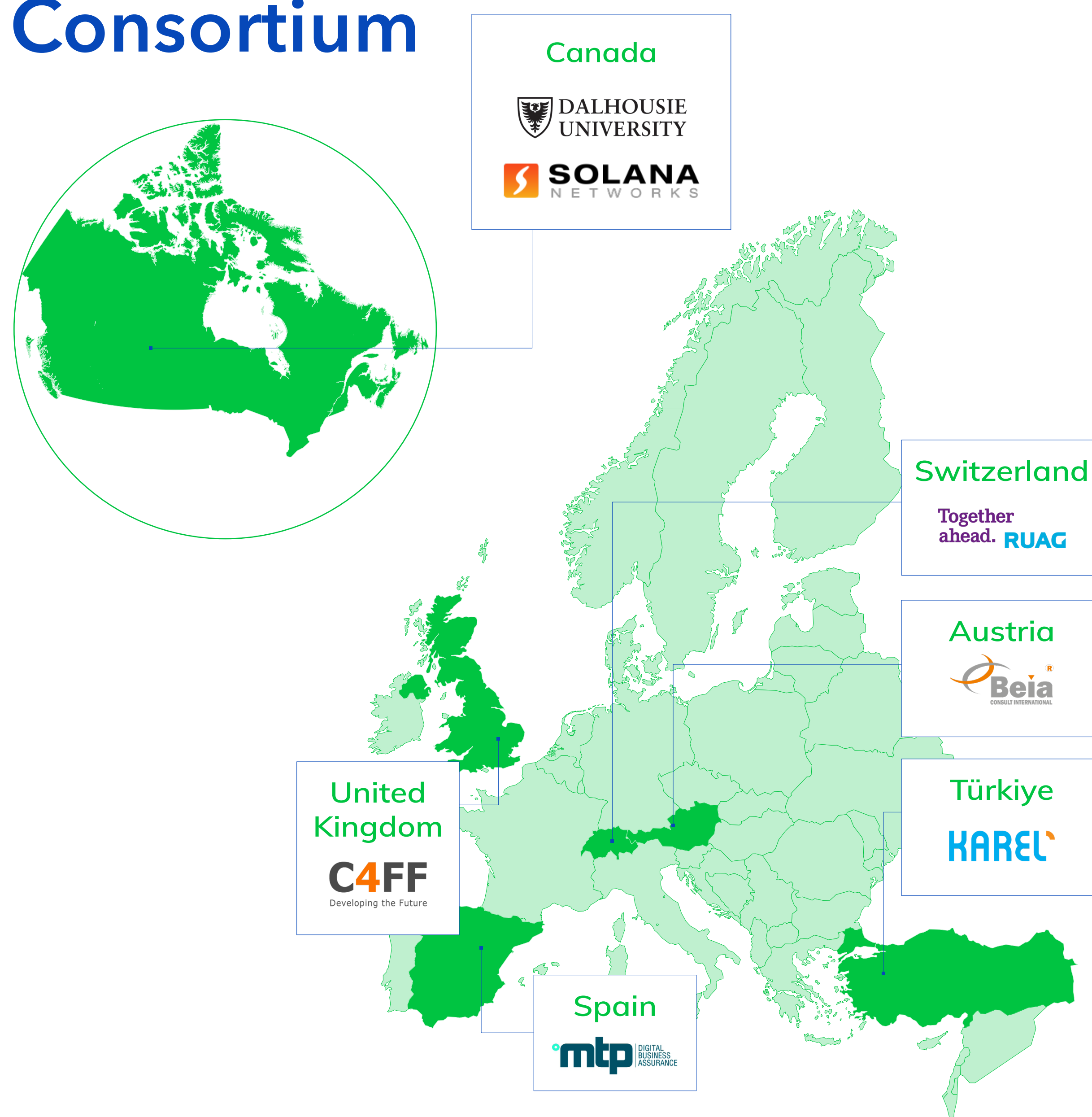


Solution for encrypted network traffic visibility

## Project summary

The ITEA project ENTA (Encrypted Network Traffic Analysis for Cyber Security) will provide visibility into encrypted networks traffic as well as detect network threats. The ENTA solution serves a wide range of markets, including Communication Service Providers (CSPs), Law Enforcement Agencies (LEAs), and Network & Security Equipment Vendors.

## Consortium

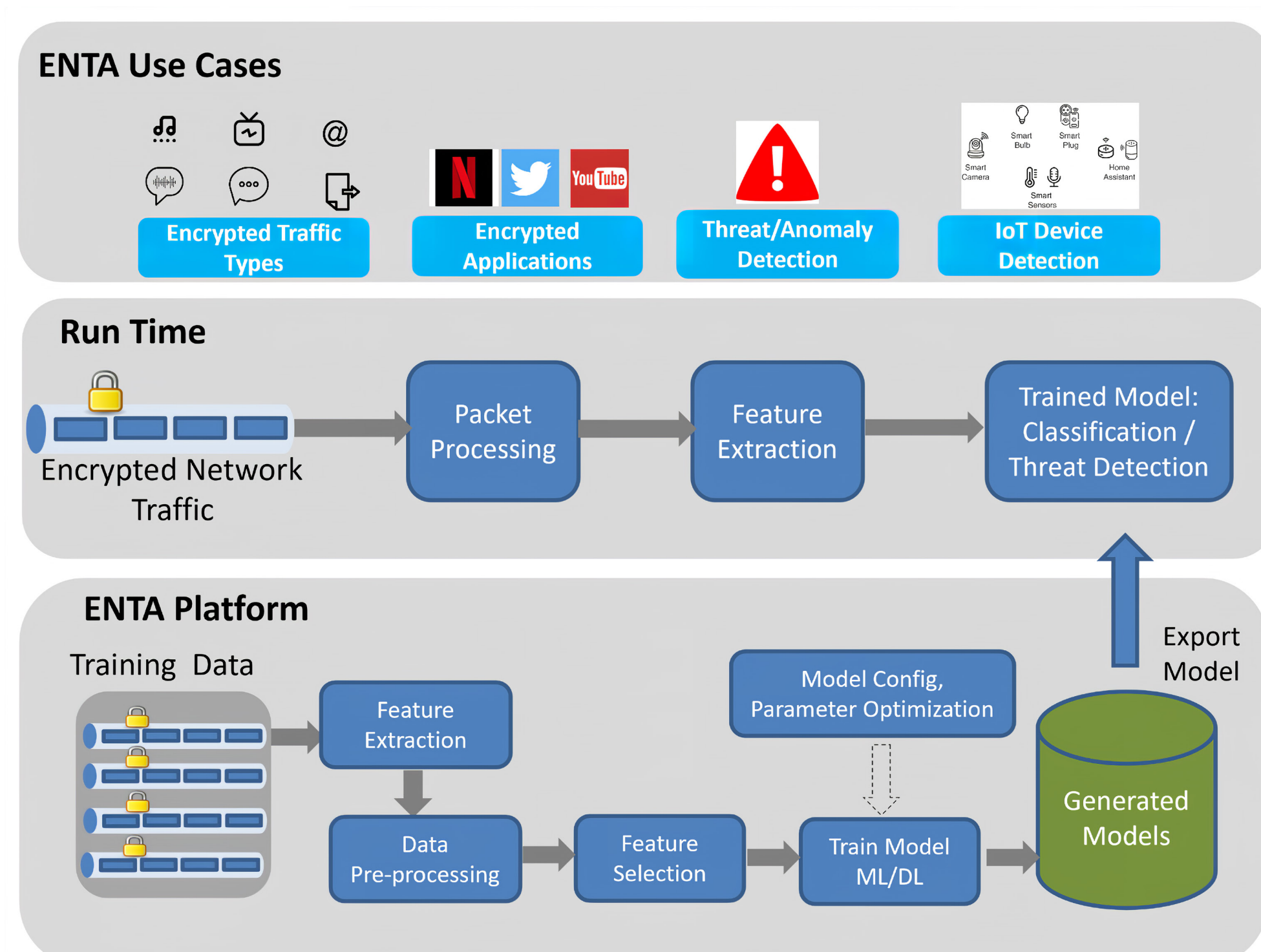


## Project duration

October 2021 - March 2025

## Expected key results / advantages

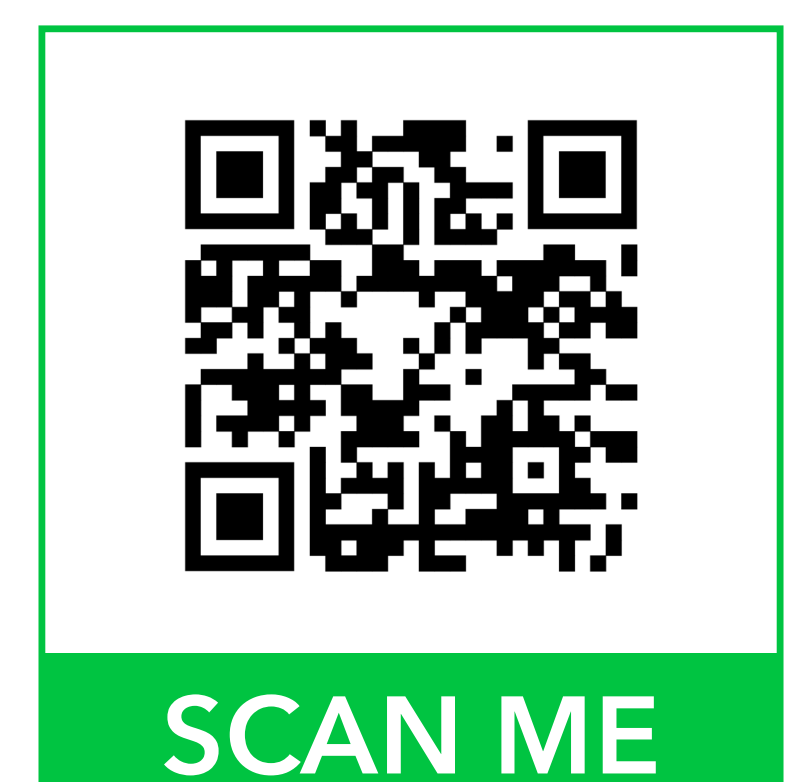
- > A platform that enables rapid development and deployment of Machine Learning and Deep Learning based encrypted network traffic analytics.
- > A solution to classify encrypted network traffic, identifying application names and traffic categories. Improved visibility to encrypted traffic is essential for Law Enforcement personnels, Security analysts and Network operators.
- > A solution to automatically discover IoT devices and detect IoT rogue devices on a network. Enable Network operators to easily identify and track increased attack surfaces due to IoT devices and possible insider threats in a network.



< ENTA solution diagram

Project website >

<https://project-enta.com/>



## Contact

Biswajit Nandy  
Solana Networks, Canada  
E: [bnandy@solananetworks.com](mailto:bnandy@solananetworks.com) T: +01 613 799 1230

This ITEA project is supported by:

